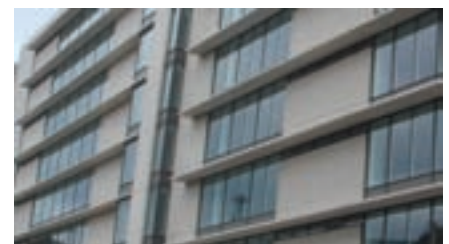


# Trent Concrete's Piccadilly Place to be in Manchester



Manchester's newest and most prominent mixed use development, Piccadilly Place, is to see leading pre-cast concrete authority, Trent Concrete, in action as part of a £1,158,690 contract.

Set to be the number one place to be in Manchester once operational, the 657,000sq ft Piccadilly Place offers five spectacular buildings incorporating residential and office space, car parking and a modern square. Upon the fourth building, which comprises 125,000sq ft of premium office space, Trent Concrete's expert team is designing, manufacturing and installing pre-cast structural columns, cladding and brise soleil.



**‘We’re proud to be playing a role in such a high-status project that has already received such acclaim. It’s a rewarding challenge to provide it with such substantial features that will be a major part of its overall visually striking appearance.’**

David Walker,  
Managing Director,  
Trent Concrete

---

<b>Project:</b>	Piccadilly Place, Manchester
<b>Client:</b>	Argent Group
<b>Architect:</b>	Hodder Associates Ltd
<b>Contractor:</b>	Carillion Building
<b>Products:</b>	Design, manufacture and installation of pre-cast structural columns, cladding and brise soleil
<b>Completion date:</b>	Spring 2009

---



## Pre-cast to look the part

Seven storeys of modern design from architect Hodder Associates, Four Piccadilly Place will hold its own among the contemporary projects. Once installed with Trent Concrete's structural columns, 11 in total, it will be provided with both strength and superior looks.

It represents the final phase of the mixed-use development, which recently has been named 'Commercial Development of the Year' in Property Week's 2008 North West Property Awards. Complementing its extensive aesthetic quality, it has also been designed to achieve the BREEAM 'Excellent' standard.



### Brief

To complement the prestigious development and the individual building's unique design, it was important to provide Four Piccadilly Place with its own modern character.

For this, it requires bold features that will make it stand out and hold its own among the rest of the development. Forming a major part of the solution are to be a number of extensive concrete columns that can bring the building's overall aesthetic alive.

### Solution

At 8.5 metres in height and 900mm by 350mm thick, the dark grey reconstructed stone columns are substantial. This requires them to be cast in two halves. However, producing the same product and such a high quality from another material would push the budget substantially and be near unfeasible.

Also included in Trent Concrete's work is over 2600m<sup>2</sup> of honed white reconstructed stone mix cladding to create a striking all over aesthetic worthy of catching the eye.

Keeping the sun off the workers will be a series of pre-cast brise soleil. In a gleaming white reconstructed stone finish, it will top off the modern architectural display.

### Benefits

With green targets increasingly demanding better standards in construction, Trent Concrete's pre-cast solution is a good environmental choice. Cast off site in quality controlled conditions and requiring a minimum of equipment to install, emissions are minimised, so the development can rest assured that work with the company won't impact upon the environment.